

LANTEGLOS PARISH PLAN



January 2005

*Produced by
Cornwall Rural Community Council
For Lanteglos Parish Council*



Lanteglos Parish Plan

| Contents | Page Number |
|--|-------------|
| About the Parish Plan | 2 |
| The Steering group members | 4 |
| The Parish Plan—The Way Forward | 5 |
| District & County Community Strategies | 5 |
| About Lanteglos Parish | 6 |
| Housing & Development | 8 |
| Employment | 11 |
| Community Services & Facilities | 14 |
| Health & Social Services | 20 |
| Traffic & Transport | 23 |
| Leisure & Recreation | 28 |
| Retail Outlets | 33 |
| Tourism | 35 |
| Environment | 36 |
| The Future | 40 |
| Thank You | 40 |
| Useful Contacts | 41 |
| Glossary | 44 |

About the Parish Plan

Background to the Parish Plans Process

This document, the Lanteglos Parish Plan, came about through the introduction of the Countryside Agency's Parish Plans Grant Scheme—part of the Vital Villages Initiative. The grant enables community consultation to take place, to gauge views on a whole range of issues and encourage residents to have their say in how the parish develops. It also emphasises the links between the parish council and the community.

The aim of the consultation process is to firstly identify what the parishioners want, in terms of both small and large scale projects. Residents are encouraged to give their opinions and feelings on a range of topics and also on their parish in general. The results of this consultation process are usually quite varied and can include some items that are perhaps more akin to a "wish list". However, further work is then carried out to hone down the information gathered and prioritise the issues that have arisen. From this, a more realistic action plan (The Parish Plan) can be produced and possible partners, actions and time-frames (for projects and objectives within the Plan) identified.

A community group often steers the parish plan process but the application must be made by a parish council. This is to ensure that the community and relevant parish council work together. A parish council may apply for a maximum grant of £5,000 but must also contribute a minimum financial sum of at least 5% (£250.00). A further 20% of match funding, either financial or in-kind contribution, is then required. Parish Councils can also link together to produce joint parish plans.

How Lanteglos Parish Council Got Involved

The process commenced in 2002, when the CRCC (Cornwall Rural Community Council) were asked to attend a Parish Council meeting, to explain in detail the parish plans process (which has been briefly outlined in the above paragraph).

Following on from this, Geoff Hurley, a Parish Councillor at this time, met with 16 separate organisations in the parish to explain the purpose and benefits of producing a plan. The organisations were encouraged to nominate a representative to attend a meeting of a proposed steering group, to work on the parish plan process—initially, considering the various areas where the living environment could be improved in the parish.

The Steering Group, with advice from the CRCC, considered what method of consultation would be best for their parish, deciding on a questionnaire covering a range of topics: housing & development, employment, community services/facilities, health & social services, traffic & transport, leisure & recreation, retail outlets, tourism, environment, as well as a general section.





Once the group had worked out how they would consult and also how this would then feedback to the community and help form the final plan, it was possible to submit an application to the Countryside Agency. Lanteglos Parish were successful with their grant application and were then able to get the process started.

The Questionnaire

The questionnaire was hand delivered to households in the parish between May and June 2003 - with a return date of the 10th June, 2003. 690 household questionnaires were delivered and 296 returned - a response rate of 43% and which represented over 600 individual residents. The CRCC analysed the questionnaire findings and from these produced an appraisal report in December 2003.

Further Consultation—The Prioritisation Events

At the end of January, 2004, a public open day event was held in Polruan WI Hall to both feedback information obtained from the questionnaire results and allow those attending to prioritise the issues and contribute further to the information on display. This event was facilitated by the CRCC who had prepared the information display and had consulted with various agencies on behalf of the parish. Following advice from the CRCC, the parish plan steering group also invited a number of organisations to the event and representatives from some of these were present—including: Felicity Sylvester, Parish Plans Officer at Caradon District Council; Sally Lewis, Project Officer for the East Cornwall Rural Transport Partnership; Jon Teague, Community Development Officer from the CRCC. A further evening event, organised by the steering group, was held at Whitecross Village Hall at the end of February 2004 in an effort to attract residents from other areas of the parish who may have been unable to attend the main Polruan event.

In total, 128 people made their views known at the prioritisation day events.

Photographs from the event held at Polruan WI Hall



THE LANTEGLOS STEERING GROUP MEMBERS ARE:

Clare Hadley

Chair

Robin Sainsbury

Secretary

Anthea Hillman

Finance

Geoff Hurley

John Smith

Mike Goodwin

Keith Charman

Ruth Frizzel

Beth Rigg

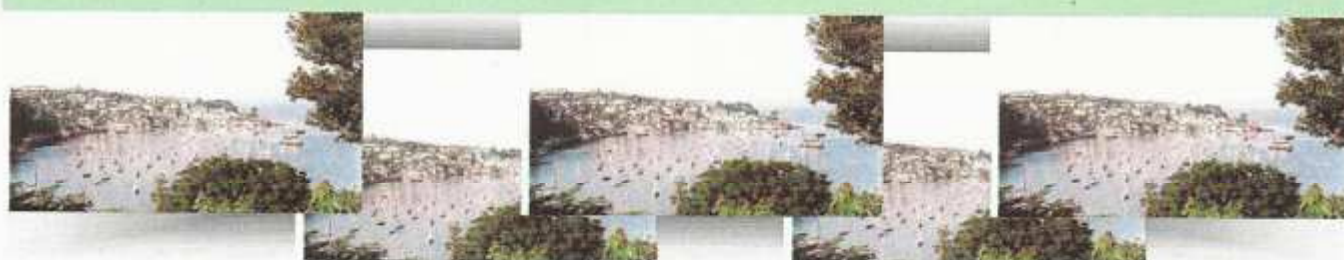
Gavin Shakerley

Peter Skellern

Geoff Finch

Peter Manley

Roger Morgan





The Parish Plan — The Way Forward

The Parish Plan is the result of much work that has taken place over the past 18 months. It brings together the information obtained from the questionnaires and from the prioritisation events into an action plan that the parish council and community can work from, for the good of the parish. Consultation with partner agencies will already have commenced throughout the parish plan process and should continue.

The parish plan should be used as a tool, in a range of ways:

- To guide and assist groups and/or the Parish Council
- For advice on possible actions, partners etc., and as the starting point for projects
- As evidence of need for lobbying and funding bids
- To set out the aspirations for the parish

To progress, it is necessary for the work to continue and it is important that the parish council and community work together and provide mutual support.

It is also important that all of the parish residents feel included and are encouraged to be involved. This is a Plan for the parish, not just for one section of the parish (however significant any area in the parish may be).

Working groups are referred to in the action grids contained within this Plan and these are not intended to be individual groups for each project. It is more common for a small number of groups to be set up to work on one or more categories e.g. housing, traffic & transport etc. and these should involve a mix of both parish councillors and local residents.

District and County Community Strategies

As the support of both the district and county councils are important to many of the issues within the Plan, it is important that they are kept informed and consulted about the issues that affect the parish. It is particularly important in view of the councils' commitment to developing community strategies. These strategies are being developed at district and county level following consultation with a range of diverse partners (private/public/voluntary sectors) as well as communities and individuals. It is important that the work of the district and county community strategies link, and that these also co-ordinate with Local Strategic Partnerships (LSPs) and public consultation. It is therefore vital that the district and county councils are aware of the consultation taking place, through the parish plan scheme.

The contact for Cornwall County Council's community strategy is: Helen Nicholson.

The contact for Caradon District Council's community strategy is: Andrew Ellis

ABOUT LANTEGLOS PARISH

The parish of Lanteglos is characterised by a dramatic rolling landscape that falls away steeply to the tidal river and creeks of the Fowey to the sea, along a beautiful stretch of heritage coastline. Polruan and Bodinnick are both ferry villages. Polruan's a ferry for pedestrians, Bodinnick's a vehicle and pedestrian ferry. Polruan commands the eastern shore of the deep water harbour entrance and the Polruan blockhouse emphasises its historical strategic importance.



The visitor who lands at Polruan Quay and climbs the steep hill is rewarded by superb views, looking back across the harbour to Fowey and westward to Gribben Head, with the dark headland of the Dodman in the distance.



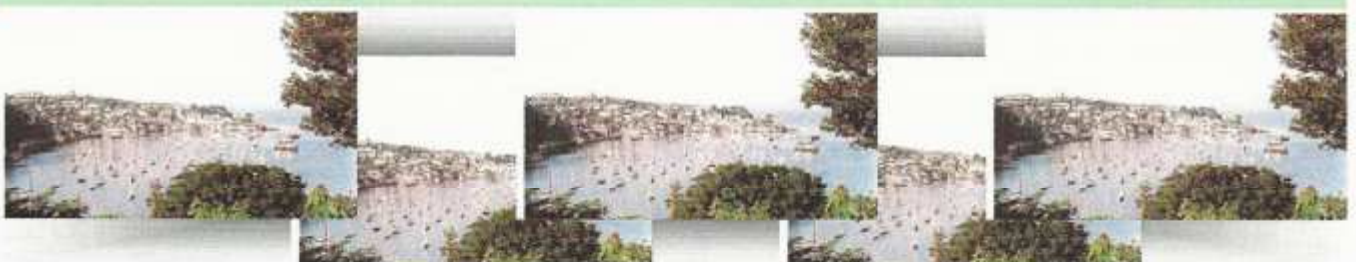
To the east the coast is even more beautiful. The well kept coastal path runs high above the sheer cliffs of Lantic Bay with its rocky coves far below. Jutting out between Lantic and Lantivet Bays is Pencarrow Head and on a clear day it is from this point that one can see from Rame to the Lizard.

Inland, the "valley church" which gives the parish its name, stands beside Churchtown Farm in a fertile landscape of fields and narrow lanes, serving the hamlets of Mixtow, Bodinnick, Lanteglos Highway and Pont, as well as Polruan. It is not uncommon in Cornwall, where a parish consists of scattered farms rather than a nucleated village, for the church to be sited in a central position as it is here.

The parish comprises some 3,000 acres bounded by water on three sides—Penpoll Creek to the north, the Fowey River to the west, the sea to the south, and to the east the parishes of St. Veep and Lansallos. The natural defences of sea and river, as well as the many springs, would have made this area an attractive dwelling place to the earliest inhabitants. Evidence that the first farmers were clearing the land is provided by the fine stone axes found on Lombard Farm and Polruan Hill. Field patterns tend to reflect mainly ancient enclosure, with shape and size often distorted by the convex landform and dominated by traditional stone-built Cornish hedges.

Mixed and ancient woodland, predominately oak, cloaks the steep sides of the river inlet down to the waters edge. The creeks are popular for water sports, while their silt and muddy banks have created valuable habitats and provide an important aspect of the landscape.

Major roads tend to follow the higher ground, occasionally dipping into the valley at the head of a creek. In some places much smaller, winding and very steep lanes descend at right angles towards riverside villages, such as Bodinnick, providing dramatic views of the bay, the wooded slopes, Fowey town as well as the railway and dockside on the opposite side of the river.





The South West Coast Path traverses the Heritage coastline of the parish, skirting above Lantivet Bay and Lantic Bay, sweeping either side of Pencarrow Head. In its leaflet on East Cornwall, the National Trust says this headland that 'as a place to be, it has no rivals in South Cornwall'.

Acknowledgements:

Text (paragraphs 2,3,4) provided by the steering group .

Additional text/information supplied by Caradon District Council: with reference to Cornwall Landscape Assessment 1994 (Cornwall County Council/Countryside Commission) & Countryside Character, Volume 8: South West (Countryside Agency)

Some of the comments made by residents, in answer to the question:

"What do you like most about living in Lanteglos Parish?"

A protected area of outstanding beauty. A friendly unspoiled village. Peace. The variety of charities and activities, local groups to be a part of.

An unspoiled little parish, clean air, quiet and most people are friendly.

Beautiful countryside and sea views. Friendly polite people. The close-knit community of village life.

Being part of a living functioning community, many of whom I have known all my life. Having family members also here. Knowing that I belong.

Community spirit: peace: beautiful scenery.

Country and sea perspectives - area of natural beauty - part of a small community - quiet.

Countryside environment close to the river and sea.

Location, river, coastline, beaches, friendly people, church ferry shops, quietness of Polruan.

Peace and quiet.

People & place - outstanding.

Quiet countryside and sea views.

Sailing, walking, good community, privacy.

Sense of community. Unspoilt by development, no need for motorway style access to village. Parish should remain as it is - unspoilt by other development.

The advantage of living in a quiet village with very few problems.

The beauty and peace of the area, along with opportunities to be involved in the community and explore many new interests.

The community spirit and the people.

The stunning location and community spirit.

Unspoilt and not commercialised. Quiet. Lovely country and sea views.

Views and good friends.

Views of harbour specially those from our house. The extreme friendliness and care for those who live here, the active church community and the abundance of available interests - theatre, choir, painting, poetry/book group.

Housing & Development

The Issue

- Need for Affordable Housing in the parish

Housing in the parish (as in many other parishes) is a major issue, with most residents expressing their view that affordable housing is needed, although many are also concerned that the character and beauty of the parish should not be adversely affected.

Justification

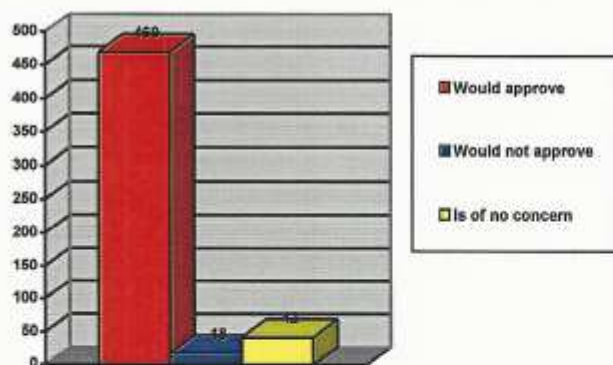
In the 2003 appraisal, the following question was posed:

"Would you approve of the provision of new affordable housing in the parish, that would be specifically tailored and guaranteed to meet the long-term housing needs of local people?"

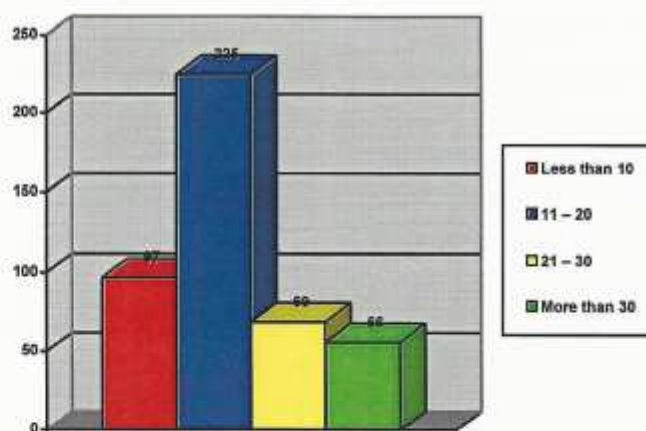
Of the 529 responses received, 469 responses indicated approval for new affordable housing, 18 did not approve and 42 responses indicated that it is of no concern.

RESULTS FROM THE 2003 LANTEGLOS PARISH APPRAISAL

Would you approve of new affordable housing in the parish, specifically tailored and guaranteed to meet the long term housing needs of local people?



How many dwellings do you think would be acceptable in the Parish over the next 10 years?



The majority of residents felt that 11-20 dwellings over the next 10 years would be the most appropriate and, at the Prioritisation Event, affordable housing was highlighted as being the most important issue within the Housing & Development topic. At the time of appraisal, 30 residents indicated that they were seeking alternative accommodation (some of these may have been couples or families). Some of these residents required accommodation immediately whilst others specified within 5 or 10 years alternative accommodation would be required.





The parish has many second home owners and there was a fairly even split to the appraisal question of whether there should be a restriction on second home ownership in Lanteglos Parish. Of the 524 responses, 271 support a restriction, 221 do not support a restriction and 32 do not know. This mixed response was echoed at the Prioritisation Event. Some residents made the suggestion/comment that second home owners should pay full or an increased council tax. At the time of the questionnaire, second home owners were required to pay a 50% council tax but this has since been increased to 95% by Caradon District Council.

Policy Statement

Caradon District Council Local Plan — Policy H12

Affordable Housing in Rural Areas — “Homes for Locals”

As an exception to policies H3 (Housing Development in Villages) and H4 (Housing Development in the Countryside), small residential developments which provide affordable housing for local people needing to live in the community will be permitted if:-

- i) the site is within or immediately adjoining a village for which development limits are defined on the proposals map;
- ii) there is an identified local housing need within the local community;
- iii) the number, type and size of dwellings proposed will meet (wholly or in part) the identified local housing need;
- iv) the dwellings are to be subject to secure arrangements to ensure that initial and subsequent occupancy is restricted to members of the local community in housing need;
- v) the size, layout and design of the development is appropriate in scale and character to the environment of the village concerned;
- vi) the development would not reduce an already narrow rural gap between settlements or seriously impair the landscape setting of a village;

Provided that no more than six affordable dwellings will be permitted during the plan period under the policy in a village which does not possess community facilities and services, including at least:

- a) a post office and village shop;
- b) a public transport link to a town, at least adequate for commuting to work
- c) ready access on foot or by public transport to a primary school, the future of which is reasonably assured;
- d) reasonably accessible medical facilities;

Provision under this policy will be additional to the provision in Local Plans for general housing demand.

Many local people across the county are currently unable to afford a home in the area that they were born/brought up in and second home ownership is a contributing factor in this.

Figures supplied by Caradon District Council indicate that within Lanteglos parish there are 495 permanent (all year occupation) households, a further 195 which are second home residences or holiday homes, and a small number of vacant properties (under 30).

| VISION | ACTION | MAIN LOCATIONS | PARTNERS |
|--|--|---|---|
| <p>To provide an adequate supply of affordable homes for a range of people within the community (e.g. local residents in housing need, first time buyers, young people and elderly people).</p> <p>Initial consultation suggests residents would like to see between 11 and 20 new dwellings over the next 10 years.</p> | <p>Monitor the need for low cost housing of all tenures via the district and local needs housing surveys.</p> <p>Set up working party to investigate potential sites and form working relationships with housing providers.</p> <p>Establish what restrictions/limits can be put in place to safe guard properties for long term local needs use.</p> <p>Carry out further work on site identification, land ownership, planning &</p> | <ul style="list-style-type: none"> ♦ Old fire station site ♦ Behind new fire station ♦ Between Meadow Walk and Policeman's Lane ♦ Whitecross ♦ Top of Polruan ♦ Bodinnick | <ul style="list-style-type: none"> ♦ Parish Council ♦ Working group ♦ CDC: Housing Enabling and Planning departments. ♦ Housing Corporation ♦ Local landowners ♦ Rural Housing Enabler (CRCC) ♦ Housing Providers: Housing Associations, Private Developers ♦ Local residents |

Any land identified for housing would need to be in compliance with Local Plan. For example housing within village development limits may be possible but some rural areas may be classified as open countryside and not suitable for housing. Work on specific site identification within areas will need to be carried out, in conjunction with district council—particularly to look at possible sites on edge of village development areas that could perhaps be considered for affordable housing under policy H12 "exception sites".

Old Fire Station—suggested site for housing development. The site is however currently in the process of being sold by CCC.



Some of the comments made by residents

"Any development must blend with the existing environment and not in any way affect the existing character of the parish."

"All future development should be for local need."

"I don't think that any restrictions should be placed on second homeowners because they bring money into the area."

"How would you prevent affordable housing for local people eventually being sold to second homeowners?"

"Planning permission only for local needs housing—not speculative."

"Limited amount of affordable housing"



Employment

The Issues

- ♦ Create/improve employment opportunities locally
- ♦ Promote small businesses/workshops

Lanteglos Parish is relatively unspoilt by commercial developments, and as such retains much of its character and appeal. Whilst fishing, agriculture and tourism are still apparent, there is limited opportunity for other types of employment. There are no large offices or retail stores in the

parish, but more of the traditional village facilities (grocers, post office, tea shop and public houses). Like many other parishes limited in terms of employment opportunities, many residents work outside of the parish, which unfortunately adds further to traffic and pollution levels.

Justification

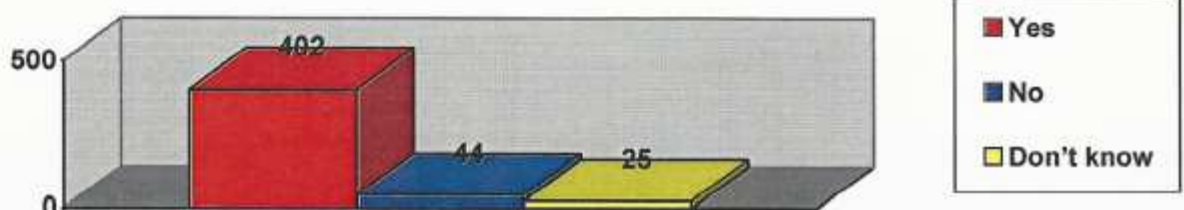
The parish population is made up of just over 990 residents including a large number of retired residents (approx 280). Less than 20 residents (of those in an appropriate age group) have never worked or are classified as long term unemployed. However, there is a desire to create employment in the parish, particularly through support of the development and production of small businesses/workshops — offering employment opportunities locally rather than externally, and contributing to the objective of a healthy, thriving parish.



Village supermarket at Polruan

RESULTS FROM THE 2003 LANTEGLOS PARISH APPRAISAL

Would you support the promotion of small businesses/workshops in the Parish?



Policy Statement

Caradon District Council Local Plan — Policy EM3

Small village workshops comprising units with a floor space not exceeding 250sq. M. (2,700 sq. ft).

Note pertaining to Looe area of Caradon: Each will be permitted in or on the edge of Lanreath Pelynt, Polruan or Widegates provided that the proposal:

- i) will not add to the difficulties with water supply, sewerage and sewage treatment and waste disposal.
- ii) will not have a materially adverse impact on the village or rural environment in terms of its scale and visual appearance, noise, effluent or fumes it would emit, and the traffic it would generate.
- iii) will not conflict with the need to conserve the best and most versatile agricultural land and minimise interference with farming.
- iv) will not have a materially adverse impact on nature conservation or landscape interests.

Applications for the use of land for such purposes as storage are not covered by this policy.

In response to the parish questionnaire, there were over 100 suggestions of where small businesses/workshops could be located in the parish. Suggestions included the use of existing but unused buildings (including redundant farm buildings, the old fire station and shops).

Ownership, planning permission, access and other relevant issues will need to be identified and tackled if this project is to be pursued. For example, at the time of writing this document, the old fire station is owned by Cornwall County Council although they have plans to sell it. A sale has in fact been negotiated with a private individual although completion has not yet occurred.

Whilst the parish or district council may well lead on parish projects, it may be sensible to speak to Cornwall County Council regarding the Economic Development and Regeneration Strategic Plan and how local projects might fit with this.

"Small businesses in a rural area are extremely hard work with a relatively small profit margin. It is very difficult now for anyone to start a small business from scratch. More financial sympathy needed."

A resident's comment from the Prioritisation Event in February 2004



| VISION | ACTION | MAIN LOCATIONS | PARTNERS |
|---|---|--|--|
| <p>To ensure a thriving local economy.</p> <p>Any new developments within the parish should be small-scale and sympathetic to the surrounding area and amenities.</p> | <p>Set up working group to explore types of small businesses required and those interested in setting up.</p> <p>Seek grants and other opportunities for the small business sector.</p> <p>Identify possible sites for business units and investigate land ownership, planning restrictions, access issues.</p> | <ul style="list-style-type: none"> ♦ Old fire station site ♦ Existing unused buildings ♦ Redundant farm buildings ♦ Empty shops ♦ Garages | <ul style="list-style-type: none"> ♦ Parish council ♦ Working group ♦ CDC ♦ Local Landowners ♦ Local employers ♦ Small business advisor ♦ Objective 1 (South East Cornwall Regeneration Project) ♦ CCC ♦ DEFRA |
| <p>To improve and create employment opportunities, for people locally..</p> | <p>Investigate job training opportunities and venues for those people who find this a barrier to obtaining work.</p> <p>Investigate child care facilities. Contact Children's Information Service to discuss availability of local facilities.</p> <p>Work with the authorities and the business sector to promote the idea of home working.</p> <p>Match local employers to available skills.</p> <p>If broadband connection is pursued (see community facilities section) this could benefit existing or new employers.</p> | <ul style="list-style-type: none"> ♦ Within the parish | <ul style="list-style-type: none"> ♦ Parish Council ♦ Working group ♦ CDC ♦ Local employers ♦ Small business advisor ♦ Employment Service ♦ Objective 1 (South East Cornwall Regeneration Project) ♦ CCC (inc. Early Years Dept) ♦ Training providers: adult education, colleges ♦ Surestart ♦ Children's Information Service |

Community Services & Facilities

The Issues

- ♦ Support for village halls in the parish
- ♦ Support for local post office
- ♦ Police presence needed in the parish

Village Halls: There are a number of halls in the parish that are used to varying degrees, the WI hall at Polruan appearing to attract the most usage. However, Polruan Village Hall, Whitecross Village Hall and the Reading Room in Polruan are all used to varying degrees—probably dependent on type or size of venue

required and facilities offered.

Justification

From the appraisal results, it is clear that there is strong support for village halls in the parish—both at Whitecross and Polruan itself. There were 316 responses in favour of a village hall at Whitecross and only 54 against. A further 153 did not know if there is a need for a village hall at Whitecross, this may be for a variety of reasons, including that these respondents may not live in Whitecross and don't feel able to comment on its use. There were also 523 responses in favour of a village hall at Polruan, 19 against and only 24 responses indicating that they didn't know if Polruan needs a village hall.

Although there is no lack of support for Polruan village hall, the problem facing the parish is whether the current hall should be repaired and modernised or whether a new build project should take place and in what form. This could be a contentious and emotive issue and needs to be taken forward with care.

- ♦ Appraisal results indicated that 238 respondents felt it should be repaired and modernised. A collective total of 272 respondents would like to see the hall re-built, however there was no consensus on where the rebuild should occur and the format/type.
- ♦ Some residents would like to see it rebuilt on the present site whilst others would like it rebuilt elsewhere—e.g. on the St. Saviours site.
- ♦ The issue of whether a new building should remain a village hall or encompass newer and different facilities more associated with a community centre also needs to be resolved. The latter was a popular choice in the appraisal and at the prioritisation event.
- ♦ Further investigation of the options is required. Each of the main options will need to be considered in turn—site implications, costings, design of building, facilities offered, access issues, feasibility etc. so that the parish can make an informed judgement on which option they feel is best for their parish.
- ♦ It is important to link any plans for the hall with other needs that are identified within this Parish Plan., for example: a youth club, employment training facilities, information point etc.





Post Office: It is encouraging that the post office is used regularly by the majority of the parishioners, although this is to varying degrees and for a range of reasons (postage, collection of pension or benefit, payment of tv licence etc) However, the appraisal results indicated that over 100 residents never use this facility. This is reflective of many parishes across Cornwall as it has become more common for people to use facilities near their place of employment, or use facilities at supermarkets (purchase of stamps) and banks, as well as the increase usage of internet services.

Despite the decreased need of post offices for many people, it is still a vital community facility. For those people who need the services offered by a local post office, irrespective of the reason, these local facilities are essential to their day to day living.

Crime: In response to an appraisal question regarding problems within the parish, 279 felt that the lack of a police presence was in itself a problem. Whilst a significant number of residents feel that illegal parking is a problem, there was a more mixed response to whether vandalism and petty crime is of real concern, although anyone who has been affected by petty crime is likely to have a clear-cut view on this. Overall, the desire to have a police presence in the parish may be more about measures to prevent crimes and ensure a continuing safe parish environment, rather more than the actual crime levels in the parish at present.

There are eight existing neighbourhood watch schemes within the parish and it appears that these are predominately in Polruan. It would be sensible to look at setting up schemes in other areas of the parish, and advice from officers at Looe Police Station should be sought.

Other Community Facility Issues

Gas Services: Through the parish appraisal, residents were asked whether they would support the provision of gas services to the parish. 242 respondents indicated their support, 210 indicated that they do not support this and 56 did not know. However, there is no reason why a community group cannot be formed to look further at whether this could be taken forward in some areas of the parish however, it needs to be borne in mind that if very few people in the same parish location want gas the cost is likely to negate the feasibility of this.

The Gas Act 1986 sets out the obligations/criteria for connection to the gas supply. General information and fact sheets are available from Ofgem (Office of Gas and Electricity Markets), www.ofgem.gov.uk.

Internet—Broadband Connection: Broadband provides fast access to internet services, without the need to "dial up". The appraisal results are that 152 respondents would like broadband access, 229 do not require broadband and 74 respondents indicated that this is not applicable to them. Comments in support of broadband were also received at the prioritisation event and this could also be an important issue if the parish would like to see new businesses develop.

Again, this (like the gas supply issue) may be a project that could still be taken forward. Until recently, broadband connection was not automatic as not all exchanges are equipped to allow for this. Therefore the demand for broadband was weighed against the cost and economics of upgrading the relevant exchange and a "trigger level" set. This trigger level is the minimum number that need to register their interest for broadband, with their internet service provider, before an exchange will be upgraded. However, the process has since changed and it has been announced that broadband will be rolled out across Cornwall (with a few exceptions). BT broadband staff have confirmed that Polruan exchange is currently being enabled for broadband, with an expected completion date of the 3rd November, 2004. For those households who may not be served by Polruan exchange there are plans to enable exchanges in the close vicinity: Lanreath and Fowey exchanges have been enabled, and Polperro's completion date is set for June, 2005.

"Broadband essential for all."

"Broadband NOW Bodinnick"

"I would like to see broadband connection to internet made available. This will help encourage new businesses to the area."

Comment from the Prioritisation Event In February 2004

Community Garden: Results from the appraisal indicated that 198 respondents would be in favour of a community garden of which 87 are in the 45-64 age group. 181 respondents would not like to see a community garden in Polruan. This issue did not attract a high level of interest at either of the prioritisation events.

Car parking: The issue of whether there is enough car parking in the parish attracted a fairly evenly divided response. Of the responses received, 213 indicated that car parking provision is insufficient whilst 238 indicated that current provision is adequate, a further 26 did not know. The comments received regarding car parking perhaps highlight that the car parking is not just about how many spaces are available in the parish, but also about the location, short/long stay restrictions, and type of parking (visitor, residential).

Public Toilets: Facilities within the parish were rated as adequate by the majority of appraisal respondents, however, there was also a strong opinion that these need to be kept open all year round and not just for the summer season.





Policy Statement

Caradon District Council Local Plan — Policy CO4 Village Shops

Permission will not be granted for development which would result in the loss of a local or village convenience shop, unless:

- i) there are adequate alternative local convenience shopping facilities in the locality; and
- ii) a refusal of planning permission would result in a property being vacant for a lengthy period.

Community Initiatives

Caradon District Council Local Plan: Extract from community initiatives section of Plan

One way in which the District Council can give financial assistance to local clubs and groups is through tax relief on the buildings used, such as the village hall. The District Council has discretionary powers to give National Non-Domestic Rate Relief to charities and non-profit making organisations. The Council can also grant aid village hall projects in rural areas, giving priority to those projects which encourage greater community use and offer assistance to the Council's Recreation Development Programme.

St. Saviours Car park



Whitecross Village Hall



| VISION | ACTION | MAIN LOCATIONS | PARTNERS |
|---|--|---|--|
| <p>To ensure the continuation of village hall facilities within the parish, for use by residents through continued use and expansion of services and facilities offered at the halls.</p> | <p>Conduct an audit of community facilities and consider the costs involved to repair and improve the standard of these public amenities.</p> <p>In the case of Polruan village hall investigate (a) cost for repair/improvements to existing hall (b) cost and feasibility of new hall in line with options contained in appraisal. Carry out further public consultation to discuss practicalities of options and to consider which is preferred option of residents.</p> <p>Consider what other services could be offered in halls to make more sustainable- e.g. ICT facilities, health facilities, pre-school/child care, banks (cash dispenser facilities) etc,</p> <p>Seek funding & advice from the appropriate agencies. Enlist the assistance of the wide range of partners that provide many of the services required</p> | <ul style="list-style-type: none"> ♦ Whitecross Village hall ♦ Polruan Village Hall (existing building) ♦ Other community buildings: WI hall, reading room etc. ♦ Possible locations if Polruan Village Hall to be re-built include: existing site; St. Saviours Site or an alternative site close to village (to be identified). | <ul style="list-style-type: none"> ♦ Parish council ♦ Working group ♦ CDC ♦ Parish council ♦ Working group ♦ Landowners ♦ CRCC ♦ Hall Committees/ Providers ♦ Objective 1 (South East Regeneration Project) ♦ CCC (inc. early Years/Adult Ed) ♦ Advisory & funding bodies ♦ CPT ♦ Possible partners include Health Authority/PCT, Employment Service, Adult Ed., Surestart, Banks and other partners that may be willing to pilot schemes in the local halls. |

| VISION | ACTION | MAIN LOCATIONS | PARTNERS |
|---|--|---|---|
| Thriving post office services within the parish - without fear of closure. | <p>If the post office owner is agreeable, a working party would need to work with the owner, parish council etc., to look at services offered and how these can be improved/expanded etc. to ensure sustainability. The tourist information service, which already operates in the P.O. is an example of a service that could be developed.</p> <p>Promote and use post office services within the parish.</p> <p>Seek advice from the post office advisor and CRCC re: info /advice on grants to improve existing</p> | <ul style="list-style-type: none"> ♦ Parish post office | <ul style="list-style-type: none"> ♦ Post office owner ♦ Parish council ♦ Working group ♦ CDC ♦ CRCC ♦ Countryside Agency ♦ Post office advisor ♦ VIRSA ♦ Objective 1 (IAP) ♦ Sub post office capital subsidy scheme ♦ Residents |
| <p>To provide a safe and crime free environment for residents of the parish.</p> <p>To reduce the current problems relating to illegal parking by enforcing parking laws.</p> | <p>Liaison with Devon & Cornwall Constabulary regarding community policing schemes and security/safety measures that the parish council could consider.</p> <p>Set up community initiatives e.g. Neighbourhood Watch.</p> | <ul style="list-style-type: none"> ♦ Generally within parish | <ul style="list-style-type: none"> ♦ Parish Council ♦ Working group ♦ CDC ♦ Devon & Cornwall Constabulary ♦ Local residents |

The community and/or parish council may wish to pursue other issues within this section, such as gas supply connection. The data from the appraisal can assist with the campaign.

Broadband connection (improved internet access) which was included within the appraisal, was also being pursued separately by residents. Many other communities in parishes across Cornwall were also lobbying for broadband and it has been announced that this facility is now being "rolled out" across most of the county.

Health & Social Services

The Issues

- Access to health services & facilities
- Residential care facilities required

Access to Health Services & Facilities: The appraisal results indicated that the majority of respondents either do not have difficulty accessing health facilities, or, that this was not applicable to them—presumably because of good health!

Interestingly, some residents indicated that access may be difficult in future when they are perhaps no longer able to drive.

Unfortunately, those who do experience problems with access to health services may be the people who need them most—the less able, mobility impaired, elderly residents etc. Over 60 respondents indicated difficulty accessing: hospitals, doctors and chemists.

Whilst it is unrealistic to think that hospital services will be made available locally, as an outcome of the Parish Plan process (or perhaps any other process!), aims can still be set and worked towards. This may mean seeking advice and liaising with a range of partners in the health sector to work towards improvements e.g. mobile facilities, prescription delivery service, increase in local surgery hours or a larger scale project, such as, working with the health and transport sector to look at appointment procedure and linking this to public transport improvements.

"Hospital appointments far too early at Treliske—impossible to get there."

"Come on Polruan. Par fought for more surgery hours which were taken from us. Isn't it about time we really fought back to regain some of the lost GP hours. We are suffering the consequences."

"This could be a problem in the future " (access to services)

"Never any appointments available. You need to know when you are going to be ill, so you can make an appointment in advance!"

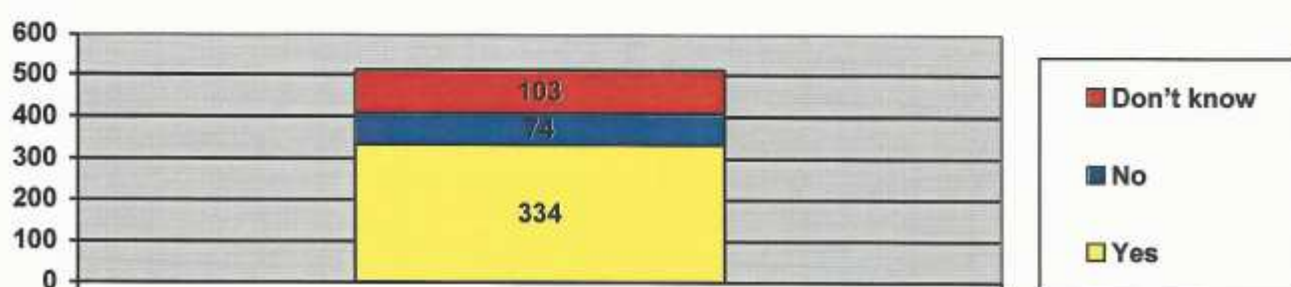
Some of the views given, concerning access to health services





Residential Care Facilities: The appraisal results show that over 300 respondents feel that there is a need for a residential home in the parish. Of those in favour, 137 respondents were in the 45-64 age group.

Is there a need for a residential home in the parish?



HEALTH SERVICES

Cornwall & Isles of Scilly District Health Authority is responsible for health care services for Cornwall. North & East Cornwall Primary Care Trust provide NHS services in the Caradon and North Cornwall Districts, as well as Lostwithiel. This area includes 5 hospitals and approximately 20 GP surgeries. The Primary Care Trust are not responsible for residential care but would be a relevant partner in other health projects.

In addition, Caradon District Council employ a Community Health Development Worker who has set up a number of health networks and is also able to advise on the wider health issues including healthy eating, walking, befriending schemes, support groups etc.

Health Related Transport Schemes: TAP (Transport Access Patients)

This scheme was set up in 2001 to bring together car schemes, that provide health related transport, under one widely advertised telephone number: 01872 223388. This scheme aims to benefit patients, because the TAP operator identifies the most appropriately located car schemes/drivers and makes the initial enquiries to link patient and car scheme. In this way the patient does not need to make multiple calls and may possibly have the chance to share journeys and thus reduce costs.

Voluntary car schemes make a charge for this transport to cover the driver costs, and rates do vary between schemes.

| VISION | ACTION | MAIN LOCATIONS | PARTNERS |
|--|--|--|--|
| Improved access for all to a range of health facilities, particularly hospital, doctor, chemist, optician and dentist. | <p>Liaise with partners to investigate health facilities and options locally ie multi -use centre with surgery, appointment procedures etc.</p> <p>To research the options and feasibility of mobile services and prescription delivery.</p> <p>To also investigate access to these facilities elsewhere by way of public transport.</p> | <ul style="list-style-type: none"> ◆ Across the parish ◆ Surrounding parishes ◆ Caradon District area <p>And,</p> <ul style="list-style-type: none"> ◆ Specialist services within hospitals across the county. | <ul style="list-style-type: none"> ◆ Parish council ◆ Working group ◆ North & East Cornwall PCT ◆ CDC ◆ CRCC (mental health, carer support) ◆ HAZ ◆ Health Promotion Service ◆ GP & dental surgeries, clinics etc ◆ Hall Committees/ Providers ◆ CCC |
| Adequate residential care facilities for the elderly within the parish | <p>To explore the demand from within the parish for residential care and explore whether there is local interest in running a private residential home. Cornwall County Council does not provide council run facilities but liaise with Caradon Social Services and seek advice on how they can help support care placements. Also obtain their publication "Care Choices for Cornwall 2004-05" which lists available facilities.</p> <p>Speak with planning dept of district council as to the feasibility for such a facility.</p> | <ul style="list-style-type: none"> ◆ Within the parish - sites not identified dependent on planning and local concern | <ul style="list-style-type: none"> ◆ Parish Council ◆ HAZ ◆ CDC ◆ Health Promotions Service ◆ CRCC (Carer support) ◆ CCC (Social Services) |



Traffic & Transport

The Issues

- Traffic too fast leading to accident/danger Spots
- Problem from volume and HGV traffic
- Shuttle bus service
- Need for new ferry services
- Concessionary fares for ferry service

Traffic and transport is often a contentious and emotive topic. As car ownership increases, so do the problems—parking, volume of traffic, safety, environmental issues and so on. As the level of cars on the roads increase so pedestrians become more concerned about their own safety walking on narrow rural roads and they, in turn, may revert to using their cars on journeys which they previously walked.

Justification The main traffic problem, identified in the appraisal, is that of speeding in the parish. However associated problems of blind bends/junctions, lack of pavements and volume of traffic were all mentioned. 250 respondents replied to the question concerning location of accident danger spots—these included Fore Street in Polruan, Polruan generally, Townsend and Bodinnick, amongst others. Installation of traffic calming measures (chicanes, traffic lights, sleeping policemen) did not, as a whole, appear a popular solution to speeding problems. However, there was more support for perhaps less intrusive measures e.g. signage, particularly 'children at play' signs.

Congestion problems in the main sections of Polruan were also highlighted by residents. Suggestions on how to resolve this included one-way traffic, banning or restricting parking and tackling illegal parking. A project that could assist in relieving some congestion, particularly in the summer, as well as aiding those residents who are less mobile is the introduction of a shuttle bus (small bus or Eden Project style golf buggy), to operate from Polruan village to residential areas/ car park at the top of the village. A significant number of residents, 186, stated that they would use a service from West and East Streets with St. Saviours car park and Greenbank area.

A popular traffic issue, highlighted in the appraisal, related to the need for improvements to the current ferry service, with residents showing particular interest in a wintertime night ferry between Polruan and Fowey, as well as a year-round service. Currently services do not allow residents to make use of evening facilities at Fowey (evening classes, socialising) and perhaps this is especially relevant on Fridays and Saturdays. A considerable number of residents (417) would also like to see concessionary fares for bone fide residents between Polruan and Fowey. These ferry service improvements were also rated highly at the Prioritisation Events.

Policy & Responsibility

Transport covers a wide spectrum of issues and problems, from actual road building schemes and maintenance, car parks, the public transport network, traffic management schemes, taxi licencing and so on. The district and county council as well as the Highways Agency, rail operators etc., all have responsibility for some of the elements of transport & traffic issues within the county. Generally speaking, Cornwall County Council is the local transport authority and has responsibility over most of the essential transport related services.

- The County Council set out their aims, objectives and aspirations in the Local Transport Plan 2001-2005. This five year plan, covering all modes of transport, sets out how the county will develop. The Plan has been developed through consultation in order that issues can be identified, priorities and targets set and evaluated. In line with government advice, the county council are working towards reducing the need to travel through land use policies and offering alternatives to the private car. There is also a commitment to improve road safety and environmental conditions.
- The County Council are currently consulting on the Local Transport Plan 2006-2011.

Ferry Services

"Improve late ferries from Bodinnick to Fowey"

"We just emphasised the need for late evening ferry service Polruan/Fowey. The adult son of one neighbour called Polruan 'Alcatraz'"

Shuttlebus and/or other bus services

"Golf buggy facility—why only to Greenbank. Are not Ocean View and Ferris Way residents part of the village?"

"A local bus should run a circular route Fore Street, St., Saviours Hill, Green Bank, top car park, caravan park"

"Community bus should run to Bodinnick not drop off/pick up at Whitecross"

Speeding

"15mph on entry to Bodinnick and Polruan, and 30mph for Highway"

"Speeding on way and into village. Congestion at bottom of hill with lorries unloading."

"Speeding in Polruan, Bodinnick and Highway—especially by lorries"

"Roads out of Polruan, Pont and Lansallos should be subject to speed restrictions"

Residents' Views



| VISION | ACTION | MAIN LOCATIONS | PARTNERS |
|---|---|--|---|
| <p>Parish roads as safe as possible for all users.</p> <p>Slow traffic down - particular awareness near known blind spots and where roads narrow.</p> | <p>Set up working group to explore possible solutions: looking at various traffic management solutions and law enforcement issues (to reduce parking congestion).</p> <p>Consult with CCC regarding feasibility (budget confines) of traffic schemes/ initiatives within parish. Also, ensure any projects e.g. signage are appropriate to the location in design and quantity. Further consultation with parish will be required regarding traffic calming measure to ensure a balance is reached as plans are worked up.</p> <p>Liaise with local County Councillor to investigate whether any small improvements can be implemented using delegated local budget.</p> <p>Also work with Parish Council, District Council, as well as Devon & Cornwall Constabulary regarding enforcement measures.</p> | <p>Specific locations include:</p> <ul style="list-style-type: none"> ♦ Bend near Essa Farm ♦ Polruan—top of St. Saviours Hill, Fore Street, West & East Street, Greenbank, Trevarder Cross, Frogmore, Quay and Furze park <p>General problems in:</p> <ul style="list-style-type: none"> ♦ Bodinnick ♦ Pont ♦ Whitecross | <ul style="list-style-type: none"> ♦ Parish council ♦ Working group ♦ CDC ♦ CCC (Highways and Road Safety) ♦ County Councillor ♦ Devon & Cornwall Constabulary ♦ Local residents |

Parish roads



| VISION | ACTION | MAIN LOCATIONS | PARTNERS |
|---|---|---|---|
| To reduce impact of heavy goods vehicles and traffic congestion throughout parish, where feasible, to make parish roads as safe as possible for all users | <p>Working group to monitor levels of road use - in conjunction with other issues of concern such as speeding, blind bend/ junctions and narrow roads etc.</p> <p>Also, to seek advice on alternative routes/ legality/ feasibility of imposing restrictions for loading/ unloading where practical. Ensure consultation with business community occurs prior to any project being taken forward.</p> <p>Seek advice and help from appropriate authorities, such as Cornwall County Council, Devon & Cornwall Constabulary. Confirm what information police require and how this should be relayed to officers to enable them to follow up issues, where appropriate.</p> <p>Identify route of possible new shuttle bus service using data from appraisal. Work towards piloting a service initially for a restricted period and timetable. Obtain costings from local operators. Seek advice from EC RTP, specifically on funding to operate a pilot service. Approach CDC and CCC for help and support.</p> | <ul style="list-style-type: none"> ♦ Throughout parish | <ul style="list-style-type: none"> ♦ Parish council ♦ Working group ♦ CDC ♦ CCC (Highways and Road Safety) ♦ Devon & Cornwall Constabulary ♦ Local businesses ♦ EC RTP ♦ Local bus operators (inc. Polruan bus & community bus) |

| VISION | ACTION | MAIN LOCATIONS | PARTNERS |
|--|--|--|---|
| To improve and expand the current ferry service destinations and operating times. | <p>Set up working group, to liaise with ferry operator, to explore possible solutions and feasibility of various ferry routes, encompassing operating times and using data from appraisal. Seek assistance and funding advice from EC RTP officer.</p> <p>Liaise with Parish Council, Cornwall County council and District Council.</p> <p>Consult with CCC and CDC over possibility of subsidy/ grant to initially pilot new ferry service e.g. Fri/Sat night wintertime service.</p> | <p>ROUTES/TIMES IDENTIFIED BY RESIDENTS:</p> <ul style="list-style-type: none"> ♦ Wintertime night ferry between Polruan and Fowey ♦ Ferry to run to Fowey town all year round ♦ Occasional ferry services: Polruan to Bodinnick; Polruan to Caffa Mill; Polruan to Mixtow <p>REFER TO APPRAISAL DATA</p> | <ul style="list-style-type: none"> ♦ Ferry operator ♦ Parish council ♦ Working group ♦ CDC ♦ CCC (Passenger Transport Unit) ♦ EC RTP ♦ Local residents |
| To provide concessionary fares on Polruan/ Fowey ferry to bone fide residents to match concessions offered to Bodinnick ferry passengers | <p>Set up working group to work with ferry operator, CCC, CDC and Parish Council to investigate feasibility of such a project.</p> <p>Contact EC RTP officer regarding possible funding opportunities and assistance with the project</p> | <ul style="list-style-type: none"> ♦ Polruan to Fowey ferry service | <ul style="list-style-type: none"> ♦ Ferry operator ♦ Parish council ♦ Working group ♦ CDC ♦ CCC (Passenger Transport Unit) ♦ EC RTP |

Photo of the ferry leaving Bodinnick



Leisure & Recreation

The Issues

- ♦ Need for Play Equipment
- ♦ Youth Facilities in parish

Play and recreational facilities or lack of them are often a cause for concern in rural parishes. Many parishes have limited facilities and look to their nearest town for a wider selection of activities and facilities. This is, of course, more difficult where the parish is not within a reasonable distance of a town, or the town itself is limited in

terms of facilities and services. Whilst many parishes would like to have additional leisure and recreational facilities, it should be noted that not all types of facilities can be supported at parish level because of the lack of financial viability necessary to sustain these e.g. leisure centre. It is important therefore to consider what facilities already exist (parish and surrounding area), what parish facilities can be upgraded (if any), what facilities are wanted, which projects are realistic and how these can be implemented.

As well as purpose built/designed recreational facilities, it should be noted that there may also be opportunities for more informal activities and facilities involving access to the countryside and green space (footpaths, seating etc) both for residents and visitors.

Justification

In the appraisal, residents were asked which facilities they would support in the parish. The options being a children's play area, outside sports facilities (rugby, football etc), skateboard facility, safe cycling tracks, permanent youth club/coffee bar, and indoor sports facility (gym, fitness equipment). The three most popular choices were for children's play equipment, an indoor sports facility and a permanent youth centre—each one attracting between 230 and 287 responses in favour.

Play area at Polruan





287 residents support the need for play equipment within the parish. However further specific child consultation will be needed to establish the type of equipment. In addition, investigation into possible sites throughout the parish will need to be undertaken—this will also involve an assessment of any existing facilities. An important consideration in any play equipment project relates to the maintenance and insurance of the area.

Consideration should be given to housing a youth club in a parish building that is also used for other community purposes, this will help make the hall itself more sustainable and lessen the financial burden of a bespoke youth club building. The same principle can also be applied to indoor sports facilities appropriate to different age groups and interests within the parish - including indoor bowling, yoga, gym/fitness equipment etc.

In relation to outdoor sports facilities, 206 respondents indicated that they would like to see outdoor provision e.g. a multi purpose area for football, rugby, cricket etc. 139 respondents indicated that there is a need for skateboard facilities and 128 respondents would like to see safe cycling tracks.

Currently, in terms of skateboard facilities, the nearest is at Looe. Currently, Caradon District Council are undertaking a "Wheeled Sports Strategy" covering activities such as skateboarding, and rollerblading. The strategy will involve assessment of current facilities within the parish, as well as opportunities for new ones.

It should be noted that whilst Cornwall County Council do not consider that they are a main delivery partner in some of the sports facility projects, it is advisable to ensure that they are aware of projects in the parish and to look at areas in which they could be a valuable partner in providing advice and guidance. An example of this would be the Youth Service who cannot provide direct funding but the appropriate Area Youth Worker can offer advice on setting up youth facilities and applying for funding. The Area Youth Worker can also provide information on the Caradon Youth Forum and local schemes that could be relevant.

| VISION | ACTION | MAIN LOCATIONS | PARTNERS |
|---|--|--|--|
| <p>Play equipment to be made available and maintained for the 6-12 and under 5 age group.</p> | <p>Set up working group to explore: location, space available, play facilities required, costings, funding, health & safety issues eg safety surfacing, and issues of access, maintenance and insurance responsibility.</p> <p>Consultation with young people in parishes to identify their requirements: Seek advice from Playwise project - also see Playwise Report 2002.</p> | <ul style="list-style-type: none"> ♦ Throughout parish including existing facilities. | <ul style="list-style-type: none"> ♦ Parish council ♦ Working group ♦ CDC (Recreation Officer) ♦ Playing field committee ♦ Playwise Project ♦ SAZ ♦ Funding bodies (advice from Playwise Project) ♦ Local businesses (sponsorship) ♦ Local residents ♦ CCPFA ♦ NPFA |
| <p>An appropriate youth centre/ coffee bar available and accessible to parish residents.</p> | <p>To check feasibility of youth centre/coffee bar in the parish including:</p> <ul style="list-style-type: none"> ♦ Venue (link to any parish hall project—see community facilities section). ♦ Access issues to centre from all areas of the parish. ♦ Investigate costs (hall cost, equipment etc) & likely sources of funding. ♦ Establish likely attendance numbers ♦ Identify volunteers to help organise ♦ Obtain youth input ♦ Involve existing clubs/ organisations. <p>Seek advice from CCC's Youth Service and other</p> | <ul style="list-style-type: none"> ♦ Within parish (venue yet to be identified). | <ul style="list-style-type: none"> ♦ Parish council ♦ Working group ♦ CDC ♦ Local halls ♦ CCC (Youth Service) ♦ SAZ ♦ Local businesses (sponsorship) ♦ Local volunteers ♦ Clubs/ Organisations ♦ Young people in parish |

| VISION | ACTION | MAIN LOCATIONS | PARTNERS |
|--|---|--|--|
| For residents to have access to indoor sports activities | <p>Working group to refer to report data and also carry out further work to identify level of sports requirements within the parish for indoor sports facilities, including gym, fitness activities, keep fit, etc.</p> <p>Investigate what existing facilities are available in or near parishes. These could also be publicised locally to ensure that residents are aware of them.</p> <p>Investigate funding, venues, partners (who will run classes, etc). This should, if possible, be linked to any parish hall plans.</p> | <ul style="list-style-type: none"> Within parish (venue yet to be identified) | <ul style="list-style-type: none"> Parish Council Working group CDC Parish halls CCC SAZ Sport England Parish clubs/ organisations |
| Skateboard facilities to meet the needs of parish. | <p>Set up community based group with potential users, volunteers and Parish Council</p> <p>Carry out youth consultation to ensure that sufficient demand warrants a skate project in the parish. If not, consider how access to facilities in other parishes can be made possible.</p> <p>Site identification/ feasibility/funding to be researched incorporating health & safety assessment. Obtain information etc from suppliers</p> <p>Feed information into Caradon wheeled sports strategy.</p> | <ul style="list-style-type: none"> Within parish (venue yet to be identified) | <ul style="list-style-type: none"> Parish council Community group CDC CCC (Youth Service) SAZ Local businesses (sponsorship) Community police officer SK8 equipment suppliers Young people/ potential users in parish |

| VISION | ACTION | MAIN LOCATIONS | PARTNERS |
|--|---|---|---|
| Residents to have access to outdoor sports facilities and activities.. | <p>Working group to refer to report data and carry out further work to identify level of sports requirements within the parish for an outside sports facility (e.g. for football, rugby, water sports etc).</p> <p>Investigate what existing facilities are available in or near the parish.</p> <p>Consult parish residents to identify which outdoor sports activities they want.</p> <p>Investigate possible funding, venues, and partners..</p> | <ul style="list-style-type: none"> ♦ Areas within parish (further consultation required to identify appropriate sites) | <ul style="list-style-type: none"> ♦ Parish Council ♦ Working group ♦ CCC ♦ CDC (Sport Development Officer) ♦ Playing field committee ♦ Landowners ♦ SAZ ♦ Sport England ♦ Cornwall Football Association |

"There are no outdoor recreation facilities open to teenagers and adults alike. As a result, with adequate numbers, organised sports teams should be set up. A result of this would be the school field being used more often."

"The young people in this village are badly served with the total absence of any sports facilities"

"Use Whitecross Village Hall for evening classes e.g. yoga"

"Somewhere for young people to hang out"

"Coffee bar should be in community centre"

"Skateboard special hours on the Coal Wharf"

Comments made by residents



Retail Outlets

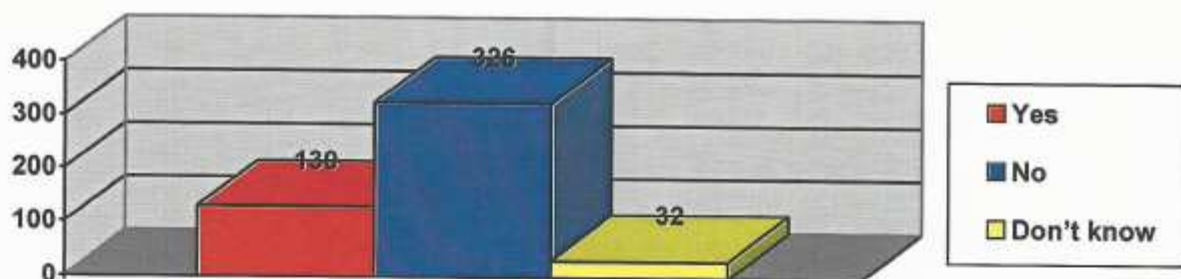
The Issue

- ♦ Expansion of retail goods available in parish

Justification

Out of 486 responses to an appraisal question, 326 respondents (67%) do not think there are sufficient shops in the parish.

Are there sufficient shops in Lanteglos Parish?



Over 200 residents would support a shop stocking items for pets and this is also the case for a fashion clothes shop. Other popular requests for retail outlets included a bakery (78 respondents), butchers (69 respondents), as well as a greengrocers, chemist, fishmongers and garage. However, there is concern that these shops would not be commercially viable because of the population level within the parish, and, in the past a range of shops have opened only to close at a later date. At present, there are some facilities in Polruan village but even these limited services are not available in Bodinnick and Whitecross (the general store which was located at Whitecross previously closed).

"Local shops and deliveries are doing their best. They need help and support"
 "Longer hours for the supermarket"
 "Reopening of general stores at Whitecross"
 "Baker and fishmonger. Comprehensive greengrocer"
 "A shop selling local produce, especially fresh vegetables. A delicatessen"

Comments from parishioners

| VISION | ACTION | MAIN LOCATIONS | PARTNERS |
|---|--|---|---|
| <p>A wide range of new services & products that can be accessed locally.</p> <p>This may be by way of new shops or mobile services, or through expansion of existing shops.</p> | <p>Working group to consult and seek advice from partners regarding feasibility (and help available) for different options:</p> <p>A. Liaise with existing shop owners as to the likelihood of expanding range of goods available. Also seek advice from VIRSA and investigate likely grant aid.</p> <p>B. Identify possible sites/ redundant premises for new facilities that are not currently catered for. Research ownership, planning restrictions, access, finance issues.</p> <p>C. Consider whether a mobile facility, serving all areas of parish, is viable and whether there is any existing mobile services that would be willing to pilot such a facility in the parish. Again, seek advice and investigate any grants that would make this a more attractive option for retailer.</p> <p>D. In conjunction with options B & C —look at the feasibility of undertaking these as a social enterprise (community business).</p> | <ul style="list-style-type: none"> ♦ Throughout parish | <ul style="list-style-type: none"> ♦ Parish Council ♦ Shop owners ♦ CDC (Economic Development) ♦ Working group ♦ VIRSA ♦ Objective 1 (South East Cornwall Regeneration Project) ♦ CRCC (Social Economy Unit) ♦ Funding bodies |



Tourism

The Issue

♦ Sustainable tourism

The appraisal results indicated that the parish is divided over whether more visitors should be encouraged to the parish and, in direct relation to this, whether further tourist accommodation is required.

There is an acknowledgement that visitors are important to the parish, but that a balance must be maintained so that visitor numbers and the associated needs do not detract from the current benefits of a peaceful and unspoilt area so enjoyed by residents. There was also a mixed view as to whether the District Council promote the area and du Maurier festival sufficiently. Again, this split view is probably related to the issue of whether more tourists are to be encouraged. The suggestion that tourists on cruise ships might be encouraged to visit the parish met with a more positive response—204 respondents being in favour of this specific type of tourism and 107 against the idea.

Changes to tourism levels are likely, at the present time, to evoke strong "pro" and "anti" support throughout the parish which could prove divisive to the community. However, tourism development does not necessarily mean encouraging more people. The parish should look at devising initiatives that manage the visitors to ensure maximum benefit to the community, economy environment whilst providing a quality experience to the tourists.

The local post office also acts as a tourist information point, receiving information from Caradon District Council. This service needs to be maintained as it is useful for visitors and also increases the viability of the post office (see services and facilities section).

Although cruise ship tourism was the most favourable option it was not a resounding petition by the residents and therefore care must be taken before proceeding with any tourism projects in the parish.

At this stage, the parish council may wish to consult with the tourism officers at district and county council level for advice and their views of the impact various proposals may have on the parish, which could then be fed back to the community (perhaps at an open day) and which might alleviate a number of concerns that some residents may have.

Initially, the promotion of the du Maurier festival may be the least contentious project that the parish could take forward. However, it is necessary that the community are advised of any proposals and that they are given the chance to air their views.

Environment

The Issues

- ♦ To clean and tidy up public areas
- ♦ Provide opportunities for increased recycling
- ♦ Measures to improve/enhance waterfront

Concern for the environment is of importance to the parish. This is of no real surprise, as it is located in a beautiful, coastal location that seems to be acknowledged and prized by its residents.

The first two issues above fall within the larger picture of general environmental issues and concerns, and within the context of district and county-wide environmental policies and strategies, they can be viewed as grass roots action and plans at community level which will contribute to the larger picture of a sustainable natural and built environment.

Other questions within the appraisal concerned footpaths and the coastal environment. Most respondents (78% of those who answered the question) felt that these were adequately maintained. However, there are always general maintenance issues that arise from time to time including misleading or lack of correct signage, footpaths that are less well used and hence are prone to becoming overgrown and such individual problems need to be logged so that they can be tackled at an early stage.

Justification There was a clear message from residents that the appearance of the parish is of utmost importance to them. Residents were given a range of options and asked to indicate which measures they would be in favour of, the results are shown in the table below.

| SUGGESTIONS | IN FAVOUR | AGAINST |
|---|-----------|---------|
| Full time employment of a street cleaner | 375 | 58 |
| Removal of overhead power and telephone cables | 282 | 136 |
| Tidying up Blockhouse and it's approaches | 290 | 77 |
| Provision of a rubbish skip | 247 | 118 |
| Collection of black refuse sacks on Saturdays (change-over days) | 273 | 87 |
| Total | 1467 | 476 |

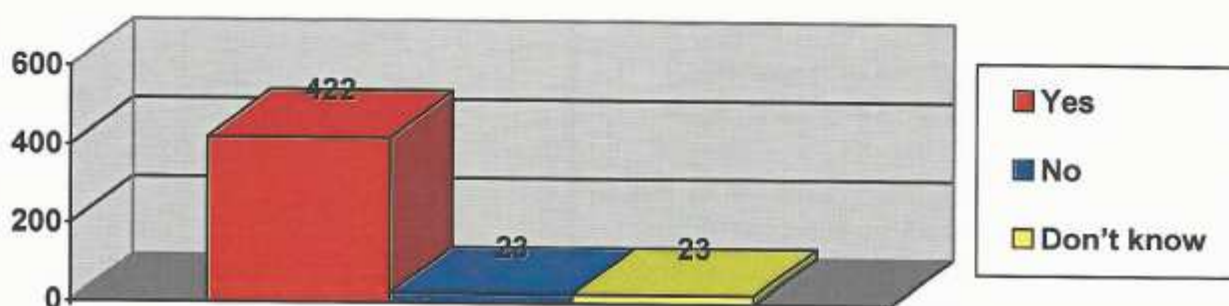
Additional comments relevant to a parish clean up, related to the need for litter and dog mess bins.





Recycling: Reassuringly, the parish are keen to have improved recycling facilities. General statistics indicate that each household in the UK produces approximately one tonne of rubbish annually and that around half of this could be recycled.. There is a commitment from Government and local authorities to increase the amount of recycling that occurs and this forms part of the "waste strategy". Whilst Lanteglos Parish has some recycling facilities, the residents would like to see a parish wide collection scheme.

Would you be in favour of a scheme to collect household recyclable waste.



Waterfront Measures:

Unsurprisingly, in view of the location of the parish, residents would like to see improvements made to the appearance of the waterfront. Whilst some of the options in the appraisal were more relevant to Polruan village (see table below), there are other waterfront areas in the parish that will need to be incorporated into a "beach clean up" and other appropriate projects.

| WATERFRONT MEASURES | NUMBER OF RESPONDENTS |
|---|-----------------------|
| Greater security and control of boats at the pontoon | 173 |
| Front beach to be regularly cleaned | 341 |
| Brightening up of the quays in Polruan (flower tubs etc) | 288 |
| Provision of additional dinghy storage and access to moorings | 222 |
| Total | 1024 |

"All beaches in the parish should be regularly cleaned"

"Better waterfront facilities at Bodinnick"

"Boat watch scheme"

"More moorings at Pont for local residents"

"More moorings in Polruan pool for residents"

Comments from residents.

| VISION | ACTION | MAIN LOCATIONS | PARTNERS |
|--|--|--|--|
| Clean and tidy public areas | <p>Set up working group to investigate feasibility & costs of employing a full time street cleaner.</p> <p>Implement community tidy up scheme including beaches.</p> <p>Obtain quotes for purchase and installation of litter & dog bins. Seek funding from parish council, district council, local sponsorship and/or research small grants available locally.</p> <p>Further research to look at the provision of rubbish skips and discuss with CDC whether there is an opportunity for changing refuse sack collection day.</p> <p>Seek funding where appropriate.</p> | <ul style="list-style-type: none"> ♦ Throughout parish specifically: ♦ Blockhouse and it's approaches. ♦ Fore Street ♦ Beach areas across parish ♦ Foot and coastal paths | <ul style="list-style-type: none"> ♦ Parish Council ♦ CDC (LA21) ♦ Working group ♦ Local community ♦ Environment Agency |
| Household Recycling collection/ facilities throughout the parish | <p>Investigate feasibility of:</p> <p>(A) The installation of appropriate recycling facilities with adequate promotion of their location</p> <p>(B) Improvement of existing facilities - in terms of extending range of items for recycling and regular maintenance (emptying) of current facilities.</p> <p>(C) Household collection of some items</p> <p>Recycling facilities come under the remit of the district council.</p> | <ul style="list-style-type: none"> ♦ Throughout parish | <ul style="list-style-type: none"> ♦ Parish Council ♦ CDC (LA21) ♦ Working group ♦ Local community |

| VISION | ACTION | MAIN LOCATIONS | PARTNERS |
|---|--|--|---|
| An enhanced and well maintained waterfront area | <p>To kick start a regeneration project for the waterfront area.</p> <p>Set up steering group, working with parish & District council to:</p> <p>A) seek funding if necessary. B) undertake feasibility study C) create waterfront plan D) undertake general beach tidy up across the parish</p> <p>Contact CCC's Countryside Projects Manager for information on how CCC might be involved in any regeneration plans for the area.</p> | <ul style="list-style-type: none"> ♦ Waterfront area ♦ All beach areas | <ul style="list-style-type: none"> ♦ Parish Council ♦ CDC (LA21) ♦ Working group ♦ CCC (Environment Dept/AONB/ Countryside Projects Officer) ♦ Local community ♦ Environment Agency ♦ Wildlife Trust ♦ Objective 1 (IAP) ♦ RDA |

Parish Developments

Since compiling the information, from the questionnaires and the prioritisation events, there have been developments on some of the issues raised:

- * Recycling - there are now doorstep collections throughout the parish, on a fortnightly basis.
- * Broadband - this is now available in Polruan.
- * Old Fire Station - this has now been sold and plans have been submitted for the site.
- * The Newsagent - has now closed, as unfortunately a buyer willing to continue it, as a going concern, could not be found. Papers are still available throughout the parish from Polruan Store, as well as two private individuals supplying the parish outside of Polruan.

The Future

The publication of the Lanteglos Parish Plan is the starting point for action to fulfil the vision for the parish. The Parish Plan process has allowed the community to have a voice in how the parish should develop and enabled objectives for the future to be set out.

It is the responsibility of the Parish Council and the community to begin the implementation of the actions set out within the plan. Some projects may be "quick fix" solutions that can be implemented fairly easily and will show the parish that things are happening. Other projects will be on-going and will require lobbying, research and persistence to achieve a resolution.

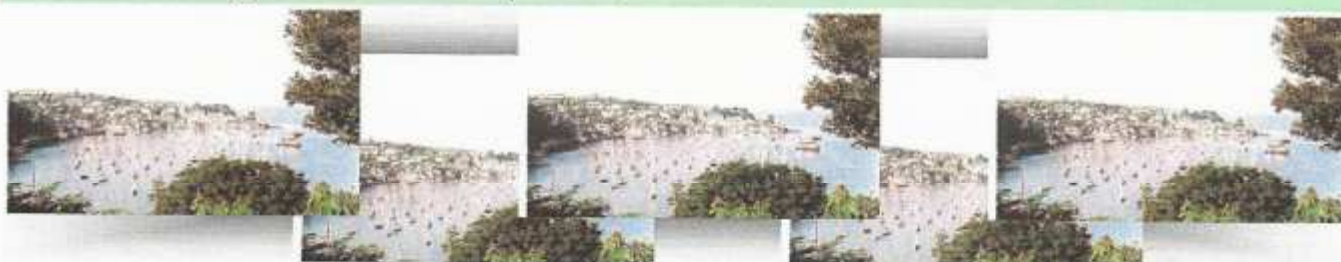
The Parish Council will need to ensure that there is on-going monitoring and review of the Plan, to take into account changing factors and priorities.

This Plan is a tool for change and much hard work by all members of the parish is still necessary to preserve, enhance and develop the parish within the realms of legitimate aspirations.

Thank You

The Lanteglos Plan has come about through the work of the steering group and parish council, but also through the crucial input of parish residents. The Parish Council would therefore like to extend a particular thank you to the residents for their time and contribution to this process.

The Parish Council have been assisted by Cornwall Rural Community Council and Caradon District Council, and look forward to working with these and other agencies/organisations identified through the Parish Plans process.



Useful Information

Contacts:

This is not intended as a comprehensive list but should provide a useful guide.

Adult Education

- * information on their services—part of Cornwall County Council

Contact details:

Adult Education Centre, Laity House, Liskeard, PL14 3DJ
Tel: 01579 345384

Caradon District Council

www.caradon.gov.uk

- * information on a wide range of topics including district strategies, services provided by the council and other information.

Contact details:

Luxstowe House, Liskeard, PL14 3DZ tel: 01579 341000

British Trust for Conservation Volunteers

www.btcv.org

- * Information on volunteering/carrying out practical conservation work.
- * Also, BTCV contact for Peoples Places & Green Futures grant scheme.

Contact details locally:

BTCV Falmouth Green Centre, Union Road, Falmouth,
TR11 4JW tel 01326 378587

Children's Information Service

- * information on childcare and early education facilities.

Contact details:

tel: 0800 5878191

Cornwall County Council

www.cornwall.gov.uk

- * information on a wide range of topics including transport policies, traffic issues (road safety), school information, early years development & childcare partnership, strategies regarding prevention of crime, youth information, community information, community strategies, environment and heritage initiatives, councillors and services that are provided by the council. Please note some individual departments are also listed separately within this section.

Contact details:

County Hall, Truro, TR1 3AY

tel: 01872 322000

Cornwall Rural Community Council

www.cornwallrcc.co.uk

- * information on the wide range of services offered (village halls, funding, youth and play projects, research, mental health issues etc.)
- * Contact details for the Playwise Project available from the CRCC.
- * Money Matters publication (funding contacts) available from the CRCC

Contact details for main office: 9a River Street, Truro, TR1 2SQ tel: 01872 273952

Countryside Agency

www.countryside.gov.uk

- * information on their role and services.

Contact details: 11-15 Dix's Field, Exeter, EX1 1QA tel: 01392 477150

Devon & Cornwall Constabulary

www.devon-cornwall.police.uk

- * information on policing strategies and initiatives, road safety, contacts etc.

Contact details locally: Liskeard Police Station, Greenbank Road, Liskeard PL14 3DX
Looe Police Station, Station Road, East Looe, PL13 1HN

Contact details regionally: Middlemoor HQ, Exeter, EX2 7HQ

Non-Urgent Calls (24 Hours) - 08452 777444

to report a crime / to leave a message / to obtain information or advice

East Cornwall Rural Transport Partnership

Contact details: based at: North Cornwall District Council, 3/5 Barn Lane,
Bodmin, PL31 1LZ tel: 01208 265693

Environmental Records Centre Cornwall & Isles of Scilly

- * for information on wildlife recording.

Contact details: Five Acres, Allet, Truro, Cornwall, TR4 9DJ
tel: 01872 240777 extn. 210

Living Spaces

www.living-spaces.org.uk

- * to receive an information pack

Contact details: PO Box 2014, Reading, Berks tel: 0845 600 3190 (local
rate) email: info@livingspaces.org.uk

North & East Cornwall Primary Care Trust

www.cornwall.nhs.uk/necornwall

Contact details: Lamellion Hospital, Station Road, Liskeard PL14 4DG
tel: 01579 335341

PANIC (Proper Access Now in Cornwall)

- * information about access to buildings and facilities. The group can carry out access audits which can be used to support funding applications.

Contact details: 60 Sarah's View, Padstow, PL28 8LU (Sue & Simon Prior)
tel: 01841 533563

Peoples Places & Green Futures

Grant Scheme

www.btcv.org

- * application forms and details available from BTCV—see website or telephone: 01491 821621

South West of England

Regional Development Agency

www.southwestrda.org.uk

- * information about the Agency, their aims and what they do.

Contact details: Castle House, Pydar Street, Truro TR1 2UJ
tel: 01872 240505

Sport Action Zone (SAZ)

www.sportactionzone.org.uk

Contact details: c/o Cornwall Enterprise, Pydar House, Pydar Street, Truro,
TR1 1EA tel: 01872 322837
email: jonathan.woods@cornwallenterprise.co.uk

Wildlife Information Service

- * wildlife information packs available also map information on wildlife designations and semi natural habitat maps.

Contact details based at: Environmental Records Centre for Cornwall & Isles
of Scilly tel: 01872 240777 extn. 213

Youth Service

- * Information and advice on setting up youth facilities and applying for funding. Also provide information on Caradon Youth Forum and other networks. Part of Cornwall County Council.

Contact details Chris Marsh (Area Youth Worker)
tel: 01752 843176

Glossary

| | |
|--------|--|
| AGLV | Area of Great Landscape Value |
| AONB | Area of Outstanding Natural Beauty |
| BTCV | British Trust for Conservation Volunteers |
| CA | Countryside Agency |
| CCC | Cornwall County Council |
| CDC | Caradon District Council |
| CIRCLE | Computers in Rural Cornwall - A Learning Experience |
| CCPFA | Cornwall County Playing Fields Association |
| CPT | Community Projects Trust |
| CRCC | Cornwall Rural Community Council |
| ECRTP | East Cornwall Rural Transport Partnership |
| HAZ | Health Action Zone |
| IAP | Integrated Area Plan |
| LA21 | Local Agenda 21 |
| LSP | Local Strategic Partnership |
| NPFA | National Playing Fields Association |
| OALS | Open Area of Local Significance |
| PANIC | Proper Access Now in Cornwall |
| PCT | Primary Care Trust (North & East Cornwall) |
| RIGS | Regionally Important Geological/Geomorphological Sites |
| ROSPA | Royal Society for Prevention of Accidents |
| SAZ | Sport Action Zone |
| SSSI | Sites of Special Scientific Interest |
| VIRSA | Village & Rural Shops Association |

SUPPORTED BY A GRANT FROM:



WITH THE ASSISTANCE AND SUPPORT OF:



AND



DESIGNED & PRODUCED BY:



cornwall rural community council
9a river street truro cornwall tr1 2sq
registered as cornwall community development limited
company no: 4144745 charity registration no: 1087550 vat no: 557 4489 96